

BeGeo 2026
24/03/2026 - Brussels Expo

La géo-intelligence au service de la résilience
Geo-intelligentie voor een veerkrachtige toekomst

Geography in unexpected places

MSF contribution in geo-data scarce contexts

David Moeneclaeey

GIS Advisor MSF BELGIUM (OCB)

begeo.be



Diamond sponsor of BeGeo 2026



Example of Data Collection

Community Mapping in Malawi

(2' video)

- 1. GIS at MSF: Operational needs in Geo-data often poor environments**
- 2. Building basemaps where none exists – The Missing Maps project**
- 3. Operational examples**
 - Indoor Residual Spraying (IRS) for malaria control
- 4. Turning Geographic data into operational decision**



MSF Presence

- In 70+ countries
- In many conflict and insecure contexts



Operational needs

Coordination



End-users oriented Services

- OC Advising
- Collaborative Mapping
- Business Line
- Roster & Field deployments



Delivery oriented Products

- Static & Dynamic Mapping
- Custom Implementation
- Earth observation
- Data Management
- Infrastructure

Delegated Substream

Provided by Missing Maps

GIS Team – 70 Staff

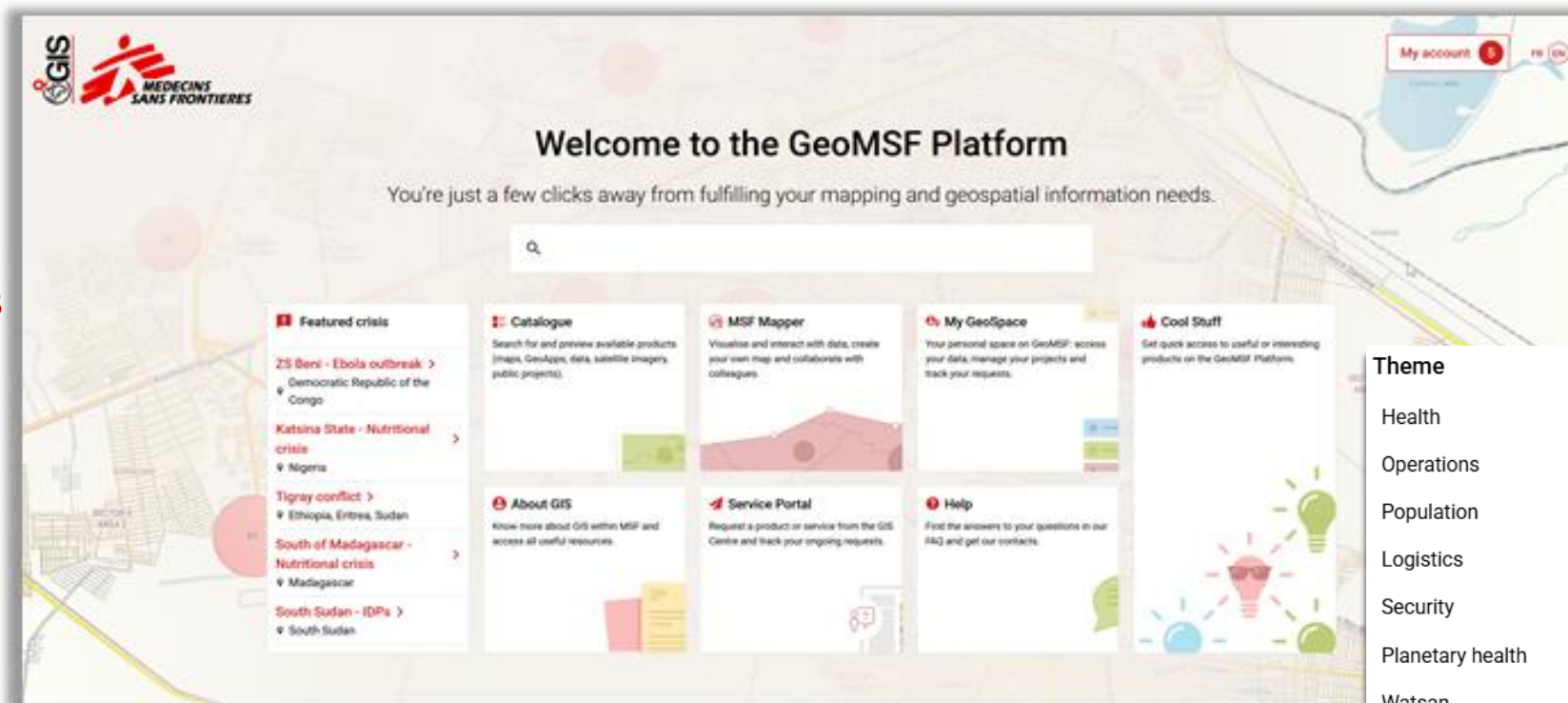
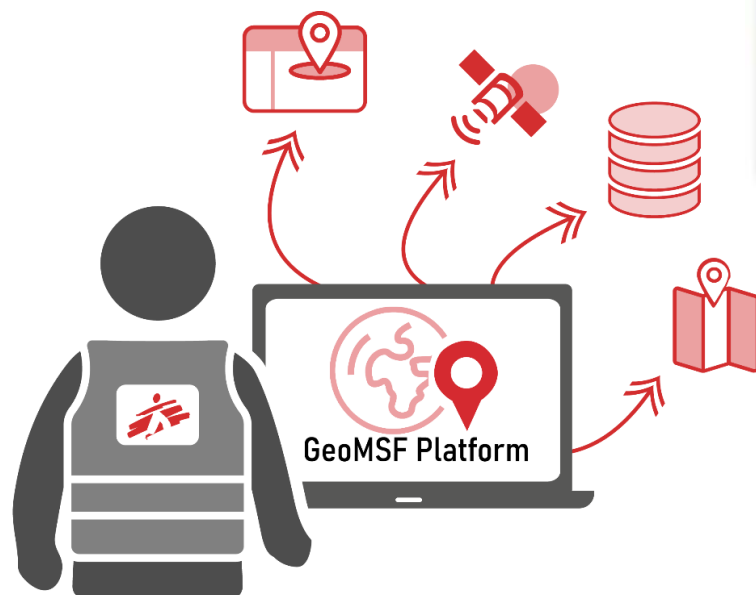
- 24 Country-Based Staff
- 52 International Deployments (*Mobile Staff, 2025*)

GIS Field Capacity



2025 Production Highlights

- 2,500+ maps published
- 85+ new GeoApps
- 263+ satellite imagery acquisitions



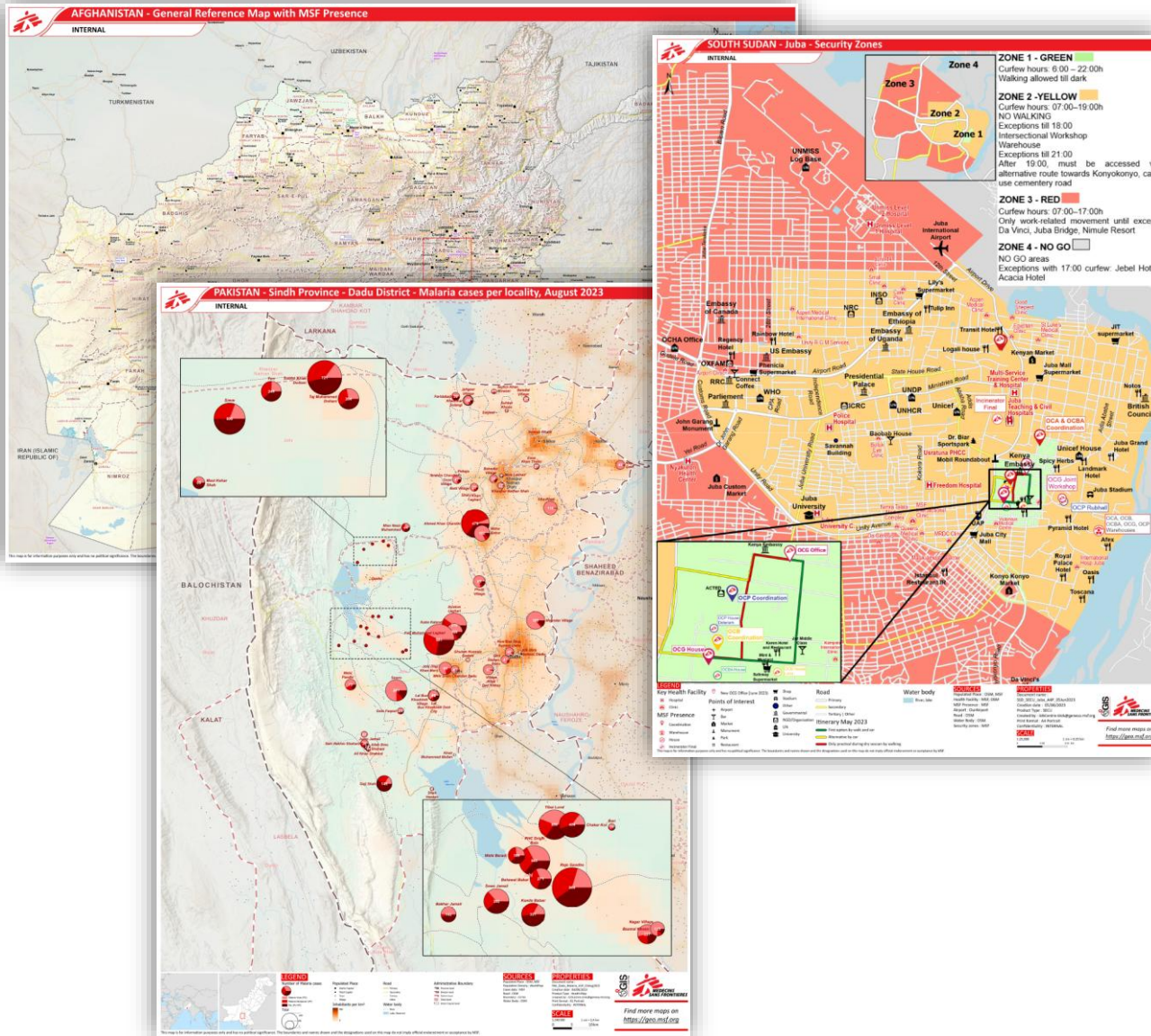
Theme
Health
Operations
Population
Logistics
Security
Planetary health
Watsan
Geographical context
Advocacy & communication
Supply

<https://geo.msf.org/home>

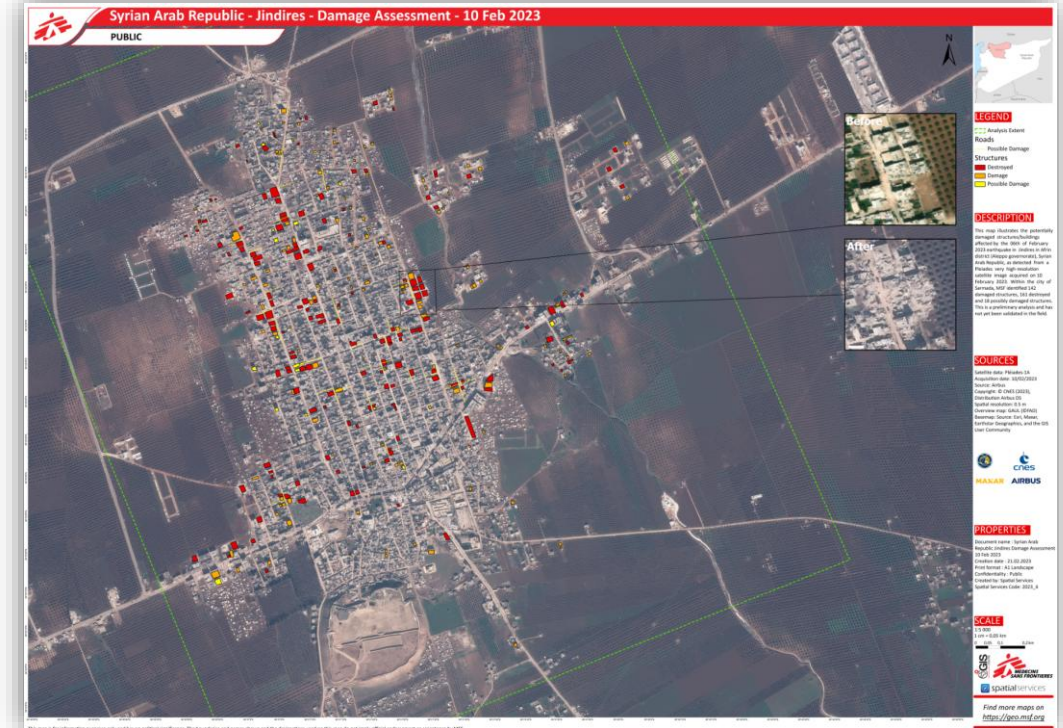
The **GeoMSF Platform** is a dynamic website useful for all **MSF staff**

It is the digital entry point to **MSF's GIS related products and services**

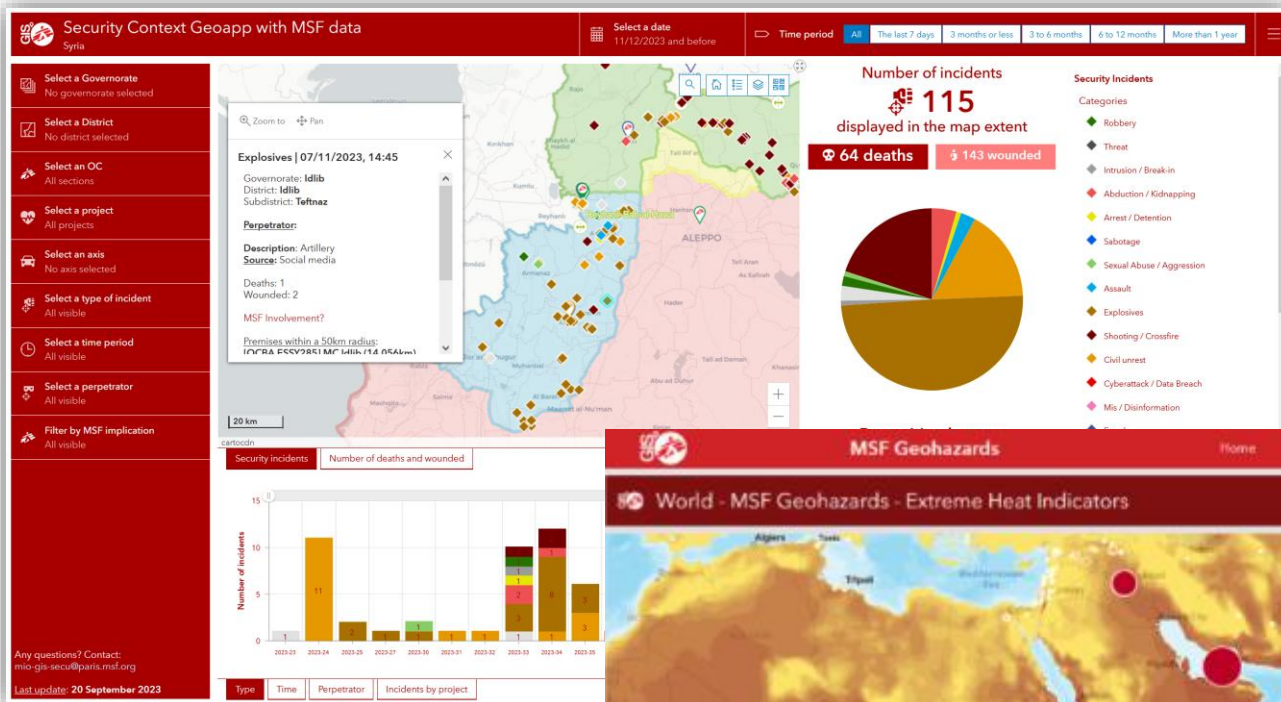
MAPS



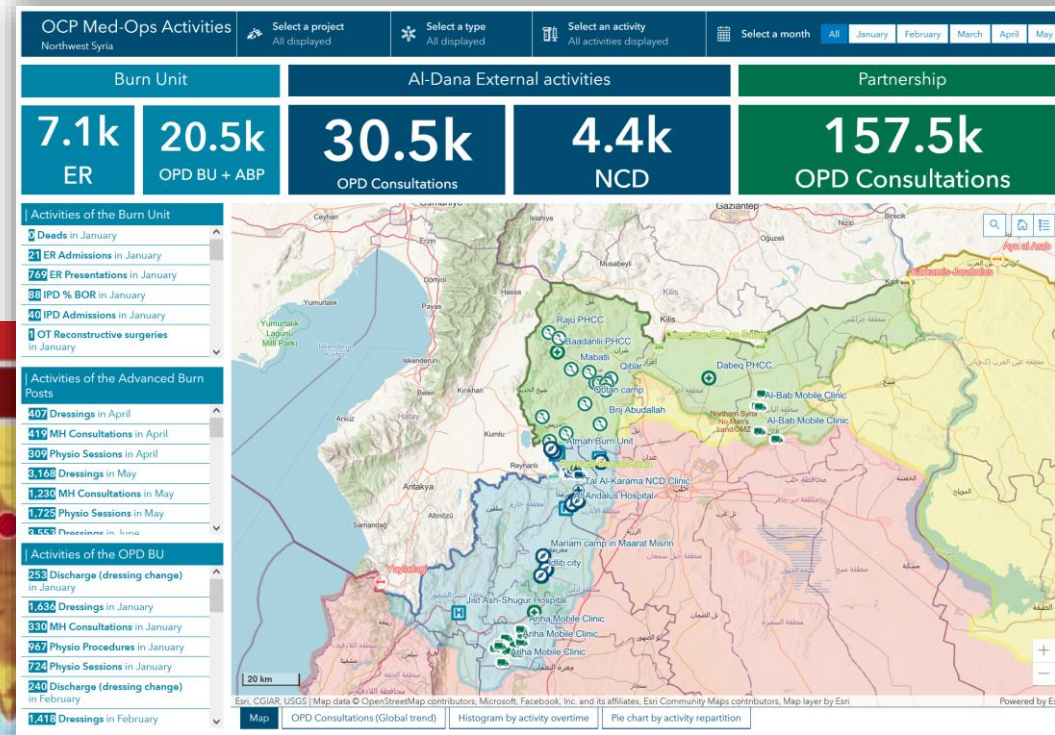
SATELLITE IMAGERY (EARTH OBSERVATION)



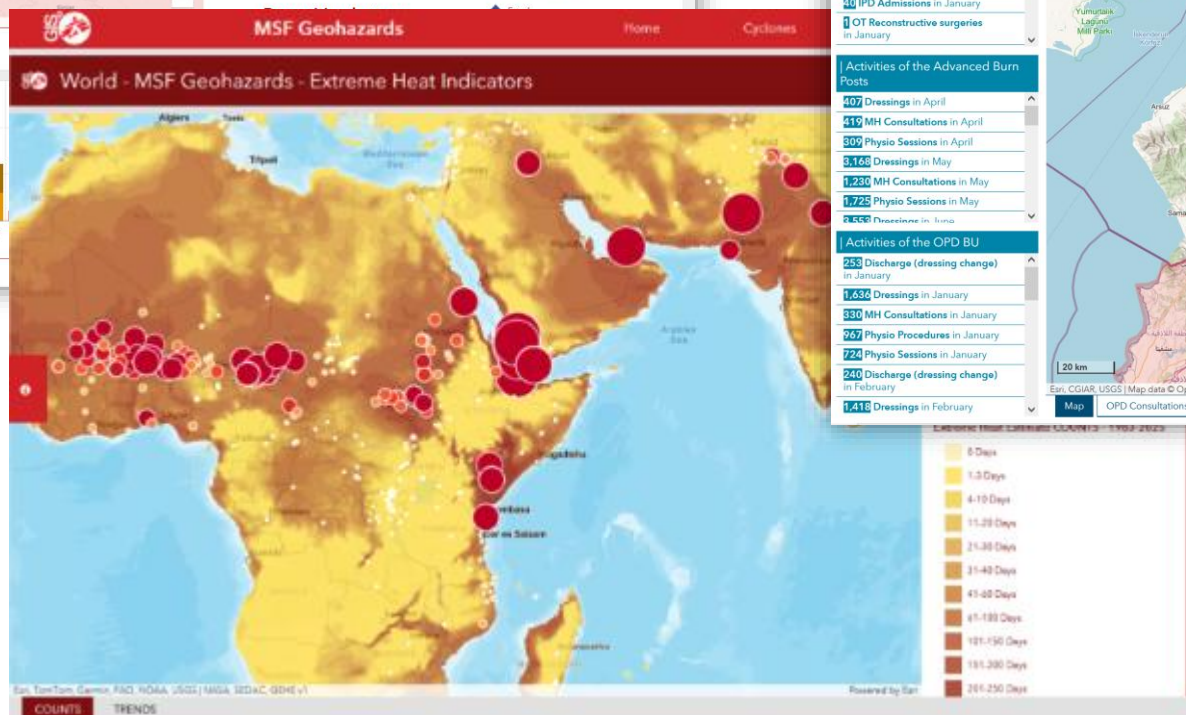
Security Context



Med-Ops Activities



Geo Hazards





Building Geography to meet the Operational Needs

Missing Maps

→ What is it?



International collaborative and solidarity mapping project founded in 2014.

There are many areas of the world that are not yet on any map. Often these are the areas where communities are most vulnerable to natural disasters, health crises, conflict and poverty.



The aim of Missing Maps is to make these regions of the world visible on maps.

Check the [website](#) !

→ Step 1: Map!

- Map remotely with Satellite Imagery
1. Add features:
 - Lines (road, river)
 - Polygons (House, building)
 2. Tag features
 3. Data validation

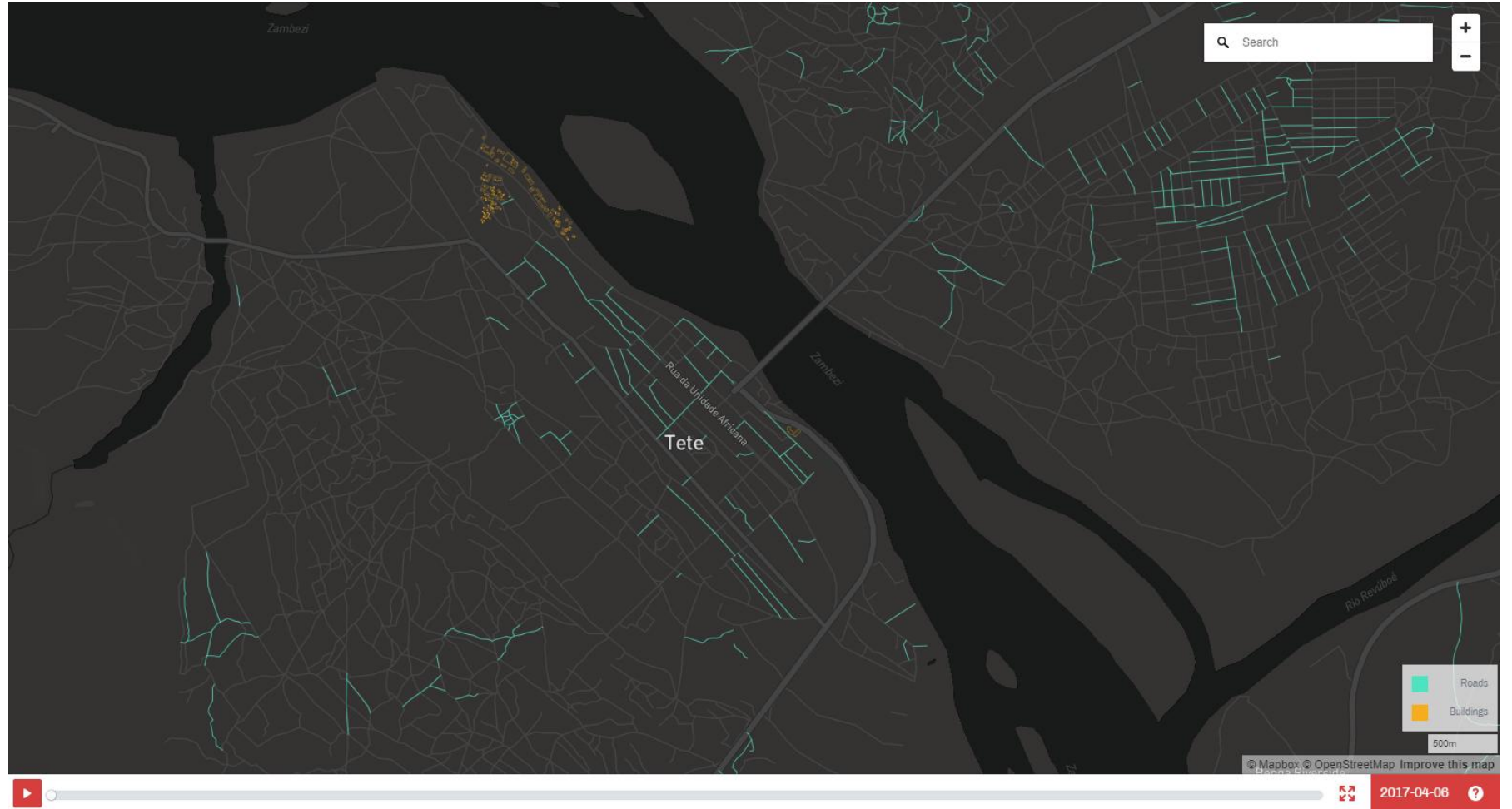
Reminder:

We are creating **vector data** out of **raster data**

Meaning we create a **shape** where there were only **colored pixel** on the satellite imagery



→ Example



OSM – Before activation

→ Example

It's not only about data **exhaustivity**, but data **quality** and **maintenance**



OSM – After activation



Example of Operational Use

Indoor Residual Spraying (IRS)
planning and piloting in Burundi

(3' video)

TURNING GEOGRAPHY INTO ACTION



THANK YOU FOR YOUR
ATTENTION !

