

# BeGeo 2024

LA CONNEXION A L'ETAT PUR  
DE ULTIEME CONNECTIE



Hoe maken we Geo leuk voor de ICT-wereld?  
Comment rendre Geo amusant pour le monde ICT ?

Bart De Lathouwer, Geonovum

[begeo.be](https://begeo.be)

Sponsored by



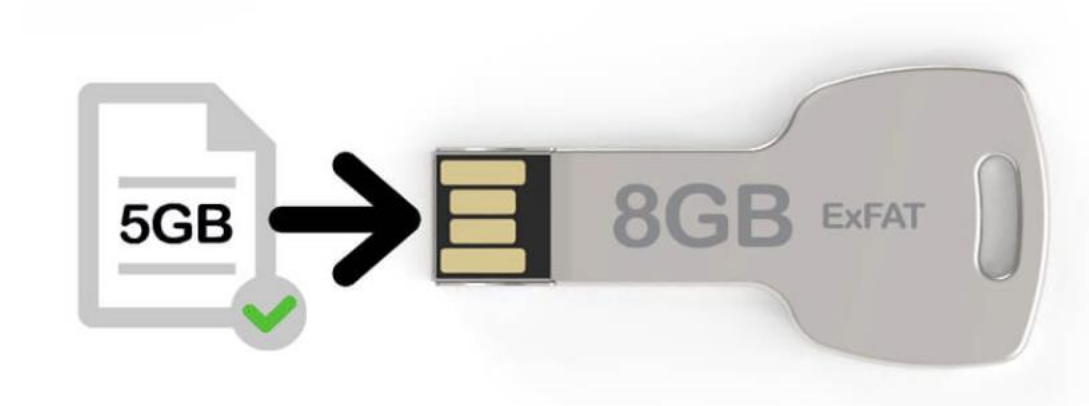
4 Data sharing use-cases  
4 cas du partage de données  
4 Scenario's voor delen van gegevens

#4

Copy data on a USB-stick

Kopieer gegevens naar een USB-stick

Copier les données sur une clé USB



# Copy data on a USB-stick



## Pro

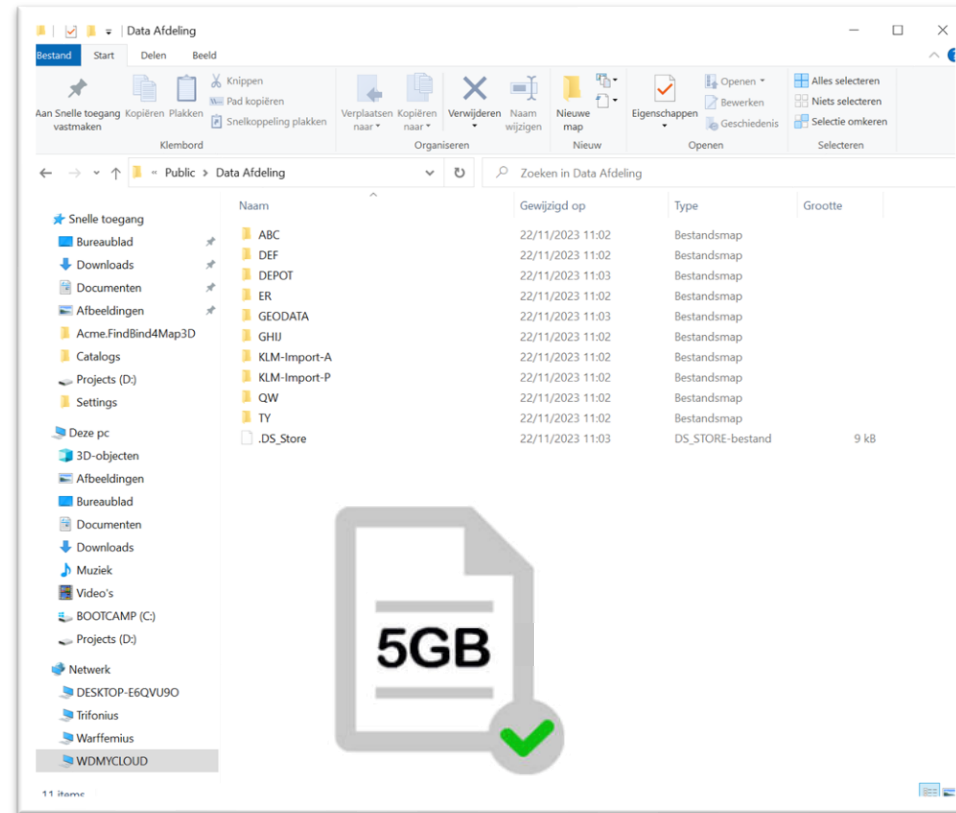
- Done, next
- Fast

## Con

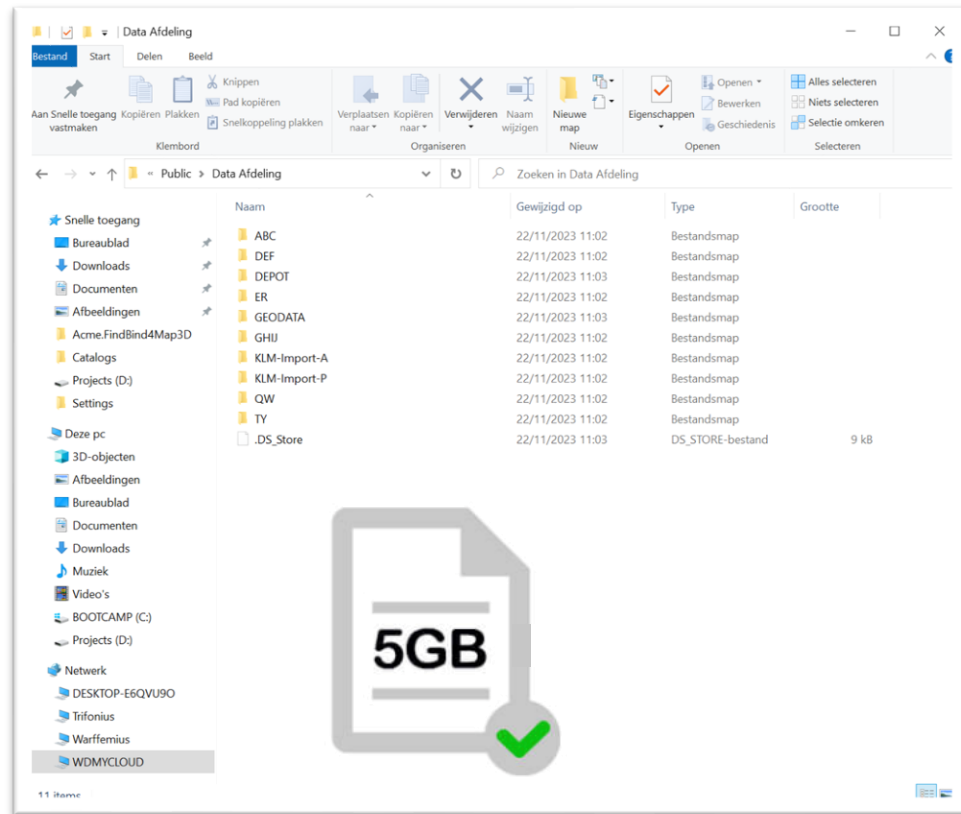
- Copy, what's real?
- No control
- Security
- Expensive
- Not scalable

#3

# Data on a network share



# Data on a network share



## Pro

- Data central
- Kinda Findable

## Con

- Maybe Copy, what's real?
- Inside org only



#2

# Data via WMS/WFS (OWS)



# Data via WMS/WFS (OWS)



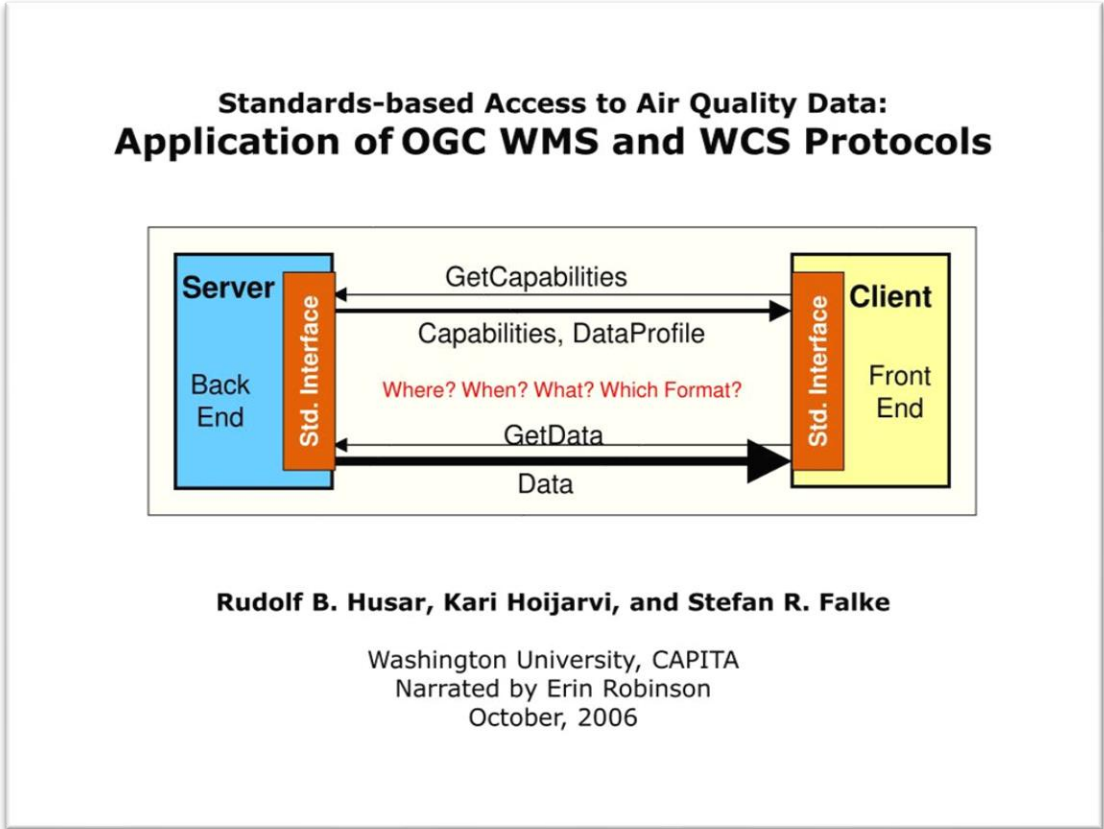
## Pro

- Data central
- FAIR

## Con

- Geo only
- Not dev friendly (in 2024)

# Data via WMS/WFS (OWS) – weird 2-step



When was WMS born?



When was WMS born?



#1

# Data via OGC API \*



Open  
Geospatial  
Consortium®

Capabilities		essential characteristics of this API	^
GET	/	landing page	∨
GET	/openapi	OpenAPI definition	∨
GET	/conformance	information about specifications that this API conforms to	∨
GET	/functions	information about functions supported in the CQL filter extension	∨
GET	/collections	the feature collections in the dataset	∨
GET	/collections/{collectionId}	describe the feature collection with id 'collectionId'	∨
GET	/collections/{collectionId}/queryables	lists the queryable attributes for the feature collection with id 'collectionId'	∨
Data		access to data (features)	^
GET	/collections/{collectionId}/items	fetch features	∨
GET	/collections/{collectionId}/items/{featureId}	fetch a single feature	∨



# Data via OGC API \*

Capabilities essential characteristics of this API ^	
GET	/ landing page
GET	/openapi OpenAPI definition
GET	/conformance information about specifications that this API conforms to
GET	/functions information about functions supported in the CQL filter extension
GET	/collections the feature collections in the dataset
GET	/collections/{collectionId} describe the feature collection with id 'collectionId'
GET	/collections/{collectionId}/queryables lists the queryable attributes for the feature collection with id 'collectionId'
Data access to data (features) ^	
GET	/collections/{collectionId}/items fetch features
GET	/collections/{collectionId}/items/{featureId} fetch a single feature



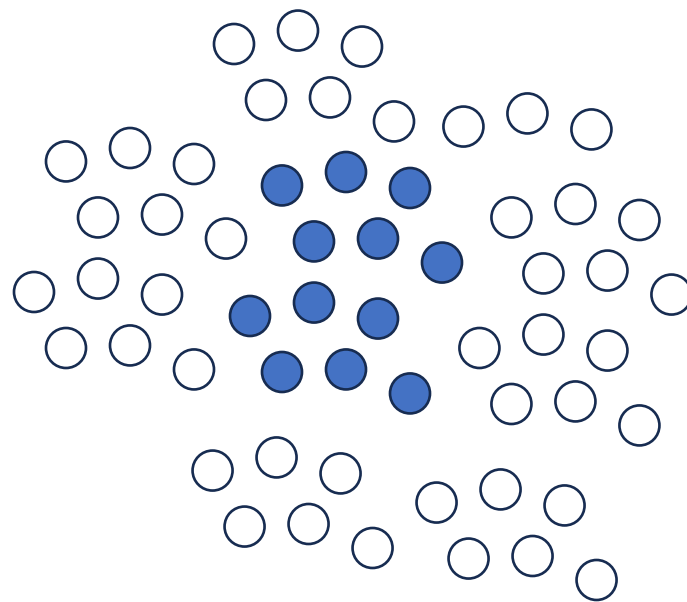
## Pro

- Data central
- FAIR
- Dev friendly
- Geo Leuk

## Con

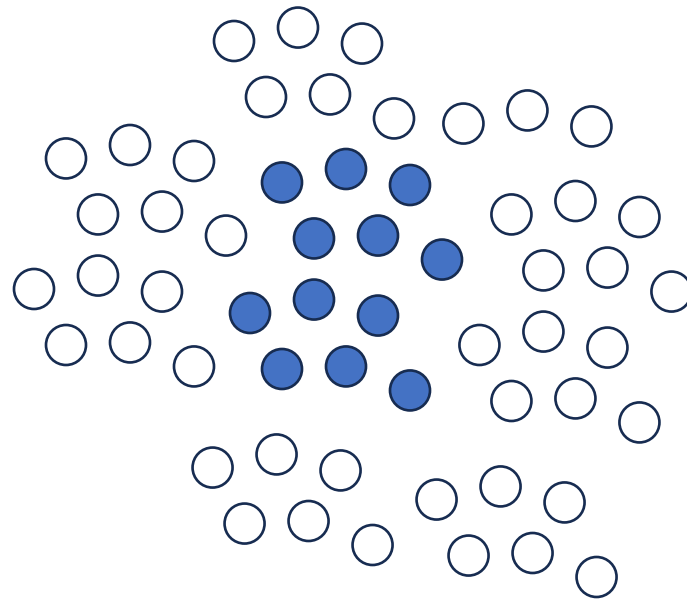
● Geo data

○ Non geo data



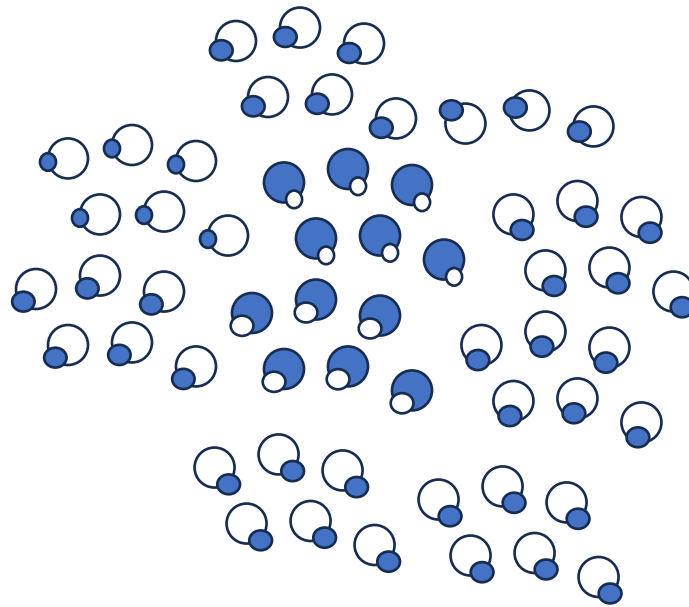
# Geo bubble

- Geo data
- Non geo data



# My idea of fun:

- Geo data
- Non geo data



**b.delathouwer@geonovum.nl**

**M +32 473 40 40 20**

**M +31 6 30 78 82 15**

**Bedankt!  
Merci!**

**Geonovum**

T 033 460 41 00

E [info@geonovum.nl](mailto:info@geonovum.nl)

I [www.geonovum.nl](http://www.geonovum.nl)

**bezoekadres**

Barchman Wuytierslaan 10

3818 LH Amersfoort

**postadres**

Postbus 508

3800 AM Amersfoort